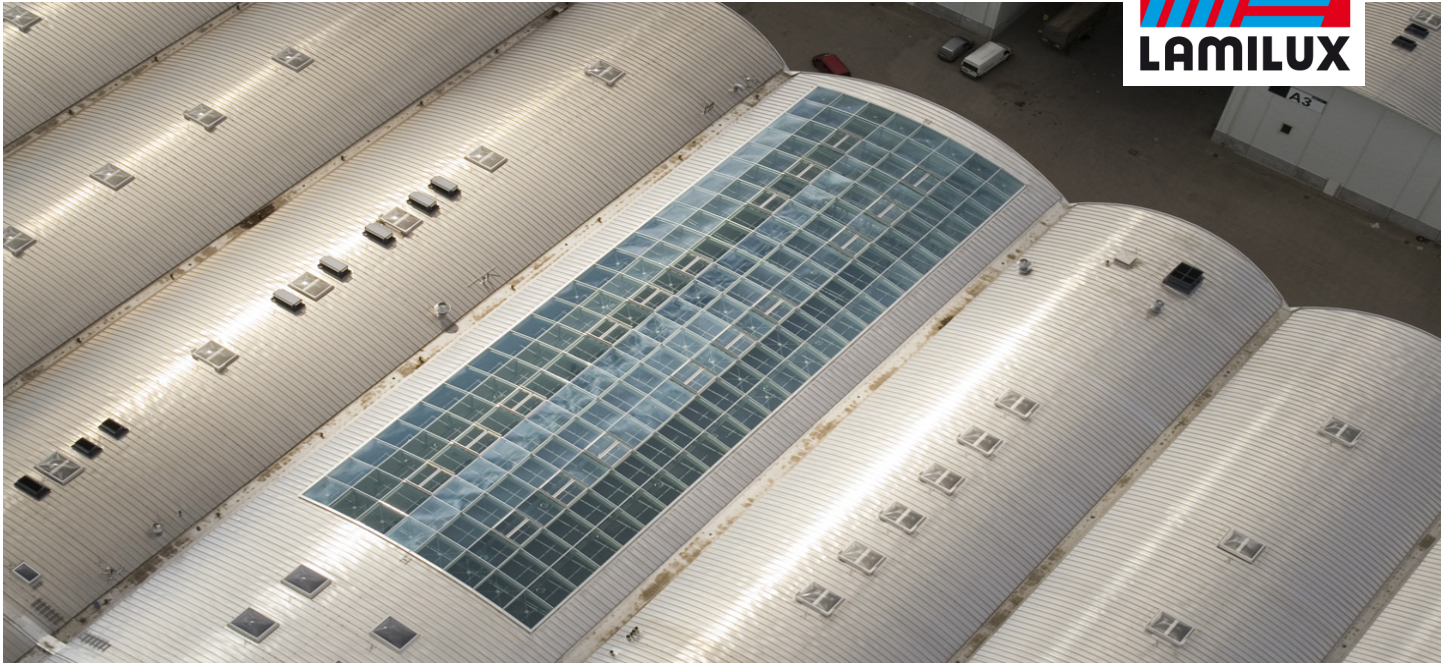


Hivatkozás

LAMILUX Rauch- und Wärmeabzug



Fair Hamburg, Hamburg

Essential info

Place / Country:	Hamburg, Germany
Year:	2007
Project:	Trade fair exhibition hall
Solutions:	SHEV systems SHEV devices Black-out blinds PPE (personal protection equipment)

SHEV systems, certified and approved according to DIN 18232, with two-stage ventilation system and installation of an adjustable black-out blind.

- Adjustable blinds do not affect the aerodynamic cross section of the SHEV systems
- SHEV systems with two-stage ventilation system: first stage with 200 mm upstroke and rain apron for adverse weather ventilation up to wind force 6, second stage with 500 mm upstroke for fair weather ventilation
- SHEV units fitted with certified LAMILUX PPE (personal protection equipment)

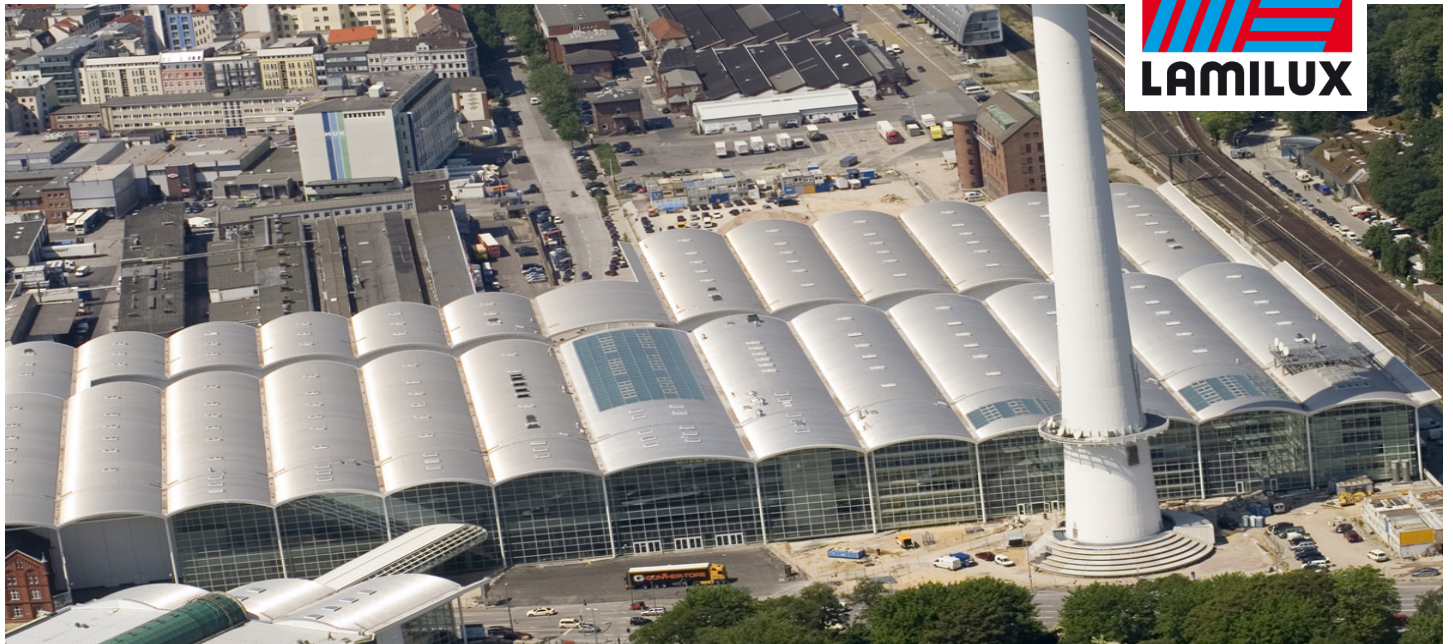
LAMILUX HEINRICH STRUNZ GMBH

Zehstraße 2 - Postafiók 1540 - 95105 Rehau/Németország - Telefon: +49/(0)92 83/5 95-0 - Fax: +49/(0)92 83/5 95-29 0

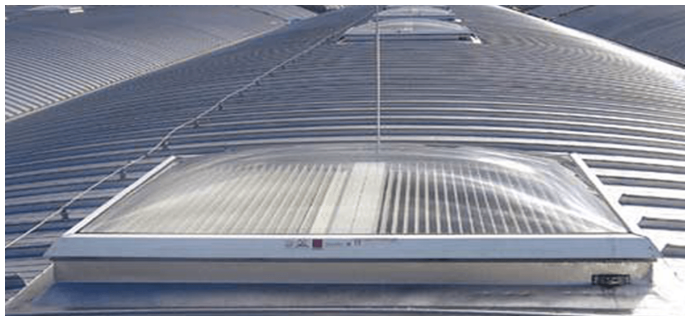
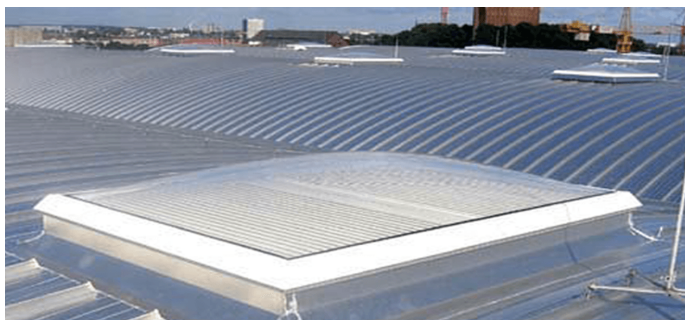
E-mail: information@lamilux.de - www.lamilux.de

Hivatkozás

LAMILUX Rauch- und Wärmeabzug



Fair Hamburg, Hamburg



LAMILUX HEINRICH STRUNZ GMBH

Zehstraße 2 - Postafiók 1540 - 95105 Rehau/Németország - Telefon: +49/(0)92 83/5 95-0 - Fax: +49/(0)92 83/5 95-29 0

E-mail: information@lamilux.de - www.lamilux.de